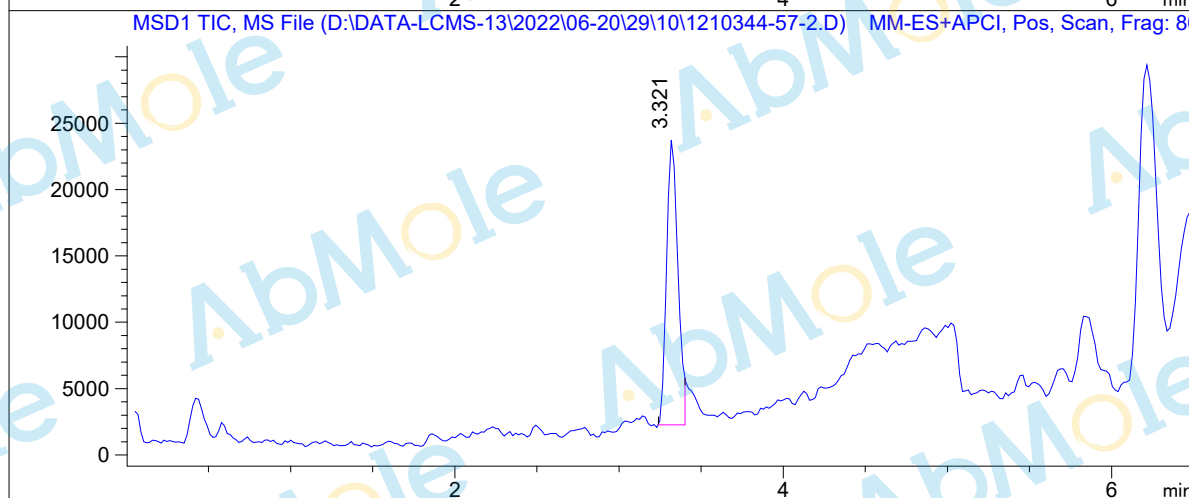
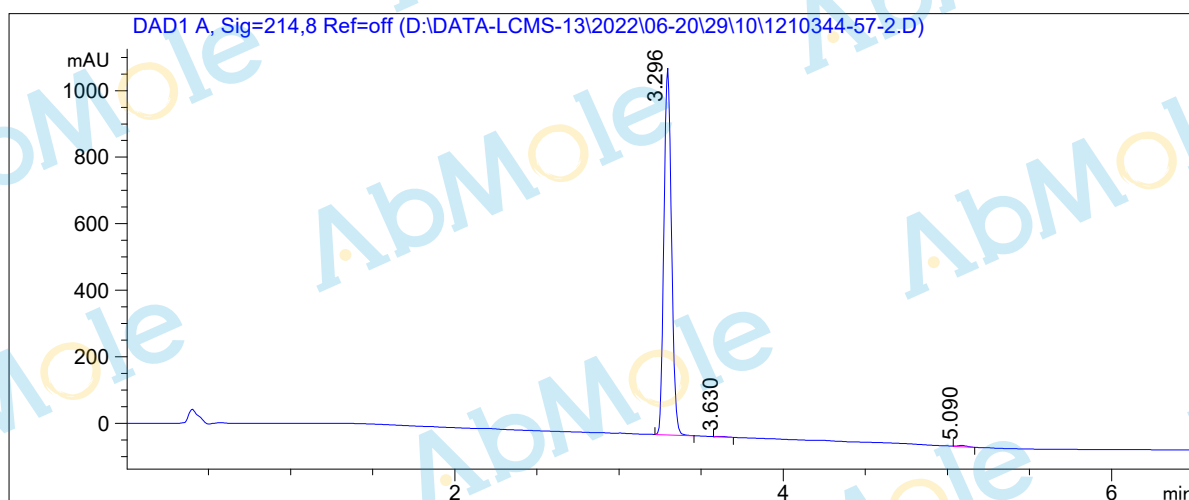


# LCMS Report

Sample Name : M6272-Ertugliflozin (PF-04971729)-01  
Data File : D:\DATA-LCMS-13\2022\06-20\29\10\1210344-57-2.D  
Injection Date : 29. Jun. 2022 Inj. Vol. : 2ul  
Acq Operator : LCMS-13 Location : Vial 63  
Acq. Method : D:\data-lcms-13\2022\06-20\29\10\P-05-95.M  
Method Info. : column:Xbridge C18 5um 4.6\*50mm ;mobile phase:B (ACN)  
A(0.05%TFA) ; gradient(B%)!as Acq.Method above



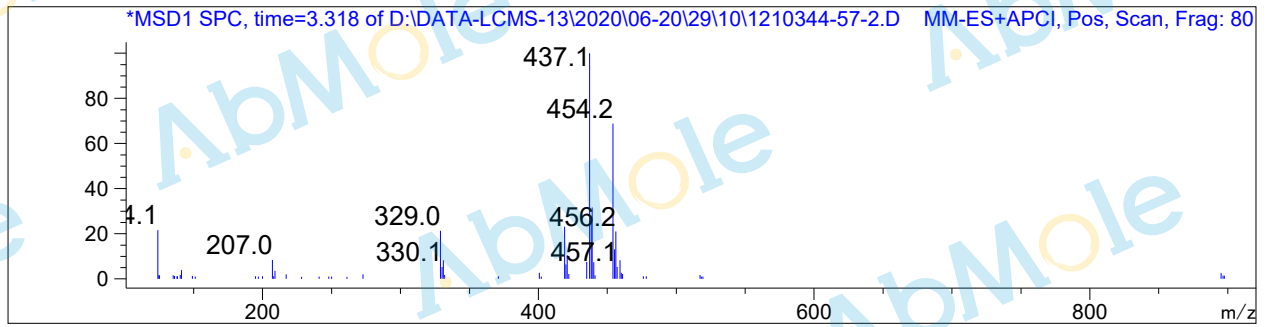
## Integration Results

Signal 1: DAD1 A, Sig=214,8 Ref=off

#	R.T.	Type	Height	Height%	Width	Area	Area %
1	3.296	MM	1107.956	99.495	0.053	3539.937	99.402
2	3.630	FM	1.918	0.172	0.061	6.983	0.196
3	5.090	FM	3.711	0.333	0.064	14.315	0.402

Signal 2: MSD1 TIC, MS File

#	R.T.	Type	Height	Height%	Width	Area	Area %
1	3.321	MF	21830.414	100.000	0.080	104490.797	100.000



\*\*\* End of Report \*\*\*